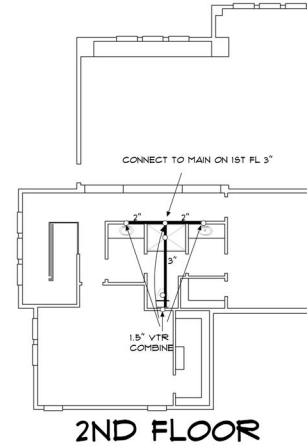


NOTES:
 DEVELOPED LENGTH TO FURTHEST FIXTURE #130'
 32" OF FALL REQUIRED

ALL DWY MATERIALS TO BE ABS OR PVC SCH 40

POINT OF CONNECTION TO SEPTIC AT FRONT OF HOUSE.

PLUMBER TO PROVIDE ATTACHMENT POINT AT REAR OF HOME FOR FUTURE ADDITION.



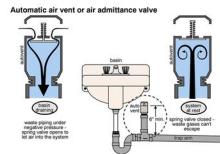
PLUMBING GENERAL NOTES

1. DRAWINGS ARE DIAGRAMMATIC. MINOR DEVIATIONS TO PIPE MAY BE NECESSARY DUE TO STRUCTURAL CONDITIONS. ANY DEVIATIONS TO PIPE SIZES AS INDICATED SHALL BE TRANSMITTED TO ENGINEER FOR REVIEW BEFORE STARTING ANY WORK.
2. ALL WORK SHALL BE DONE IN ACCORDANCE WITH THE 2009 UPC-PLUMBING CODE AND THE LATEST EDITION OF THE APPLICABLE INTERNATIONAL RESIDENTIAL CODES, MECHANICAL, ELECTRICAL, CODES AND FEDERAL, STATE AND LOCAL REGULATIONS.
3. REFRIGERATION, A/C UNITS TO BE LABELED WITH THEIR INPUT RATING AND EFFICIENCY. ALL EQUIPMENT SHALL BE BALANCED, ADJUSTED AND TESTED TO PROVIDE SAFE, STABLE AND QUIET OPERATION.
4. CONTRACTOR SHALL:
 - A) PROVIDE PRESSURE REGULATOR AND STRAINER, NOT TO EXCEED 80 P.S.I.
 - B) PROVIDE A MEANS FOR AIR EXPANSION WHEN ANY DEVICE IS INSTALLED PROMOTING EXPANSION THRU ROOF'S SURFACE, UPC 608.3.5.2.
 - C) BE RESPONSIBLE TO VERIFY THAT WATER PRESSURE AND METER STATED ON PLANS, ARE THE MINIMUM AVAILABLE IN FIELD.
5. WATER HEATERS, W/ PIPE RISERS SHALL HAVE HEAT TRAPS ON BOTH THE INLET AND OUTLET OF THE WATER HEATER UNLESS THE WATER HEATER HAS INTEGRAL HEAT TRAPS OR IS PART OF A CIRCULATING SYSTEM.
6. DOMESTIC WATER PIPING:
 - A) HOT WATER SYSTEMS: INSTALL R-2 INSULATION ON THE HOT WATER SERVICES OF THE RE-CIRCULATING SYSTEMS AND NON-CIRCULATING HOT WATER LINES IN UNCONDITIONED SPACES, PER AMENED 2009 IECC.
 - B) ABOVE GROUND: TYPE "M" COPPER (DAPMO IS 2-2003), BROUGHT FITTINGS, LEAD FREE SOLDERED.
 - C) BELOW SLAB: TYPE "L" COPPER (DAPMO IS 2-2003), TUBING SLEEVED THRU SLAB, ALL JOINTS SILVER BRAZED OR "BRISQ" OR EQUAL CROSS-LINKED POLYETHYLENE (DAPMO IS 1-2003).
 - D) TYPE "A" PIPING: W/ BRASS FITTINGS, SUITABLE FOR POTABLE WATER, WHEN INSTALLED BY A PRODUCT CERTIFIED TECHNICIAN. NOTE: DIELECTRIC FITTINGS SHALL BE USED WHEREVER DISSIMILAR METALS ARE JOINED.
7. SANITARY WASTE AND VENT PIPING:
 - A) ABS (DAPMO IS 11-2003) OR PVC (DAPMO IS 9-2003) PAINT WITH LATEX PAINT WHERE EXPOSED.
 - B) CONDENSATE DRAIN PIPING:
 - A) TYPE "M" (DAPMO IS 3-2003), BROUGHT FITTINGS PVC, OR A CODE APPROVED MATERIAL.
 - B) GAS PIPING:
 - A) INSIDE SCHEDULE 40 BLACK IRON, THREADED WALLEABLE FITTINGS OUTSIDE/EMPORED, USE GALVANIZED FITTINGS AND PIPE JOINT COMPOUND AND PROVIDE PROTECTION THAT IS CODE APPROVED. CAN USE CORRUGATED STAINLESS STEEL TUBING PROVIDED IT IS LISTED W/ AN APPROVED AGENCY. PROVIDE A SHUTOFF VALVE THAT IS ACCESSIBLE, IN THE SAME ROOM AND WITHIN 3 FEET FROM THE EQUIPMENT BEING SERVED.
 - B) SUSPENDED PIPING SHALL BE SUPPORTED AT THE FOLLOWING INTERVALS: 6 FEET FOR 1/2", 8 FEET FOR 3/4" AND 1", 10 FEET FOR 1-1/4" AND LARGER.
8. PLUMBING FIXTURES:
 - A) PROVIDE CP ANGLE STOPS TO FINISH PLUMBING FIXTURES.
 - B) PROVIDE PRESSURE BALANCED MIXING VALVES AND 2.5 GAL/MIN MAX FLOW RATES AT ALL BATHROOMS AND SHOWERS, PER IECC.
 - C) PROVIDE SHUT OFF VALVES WITH UNIONS TO ALL OTHER PLUMBING FIXTURES (I.E. WATER HEATERS) TO FACILITATE ISOLATION FOR REPAIR.
 - D) ALL PLUMBING FIXTURES SHALL COMPLY WITH LOCAL AUTHORITIES CURRENT WATER CONSERVATION CODES.

DFU CALC
 TBL 102.1 UPC

WASTE FIXTURES			
FIXTURE	QTY	FU EA	TOTAL
WATER CLOSET	3	3	9
LAV	6	1	6
BATH TUB	2	2	4
SHOWERS	2	2	4
KIT SINK	1	2	2
WASHER	1	3	3
UTILITY SINK	2	2	4
TOTAL DFU'S			32
4IN SEWER 216 FU ALLOWED AT 1/4" PR/FT			

WHERE NOTED ON DWY PLAN
 PROVIDE LISTED OATEY MODEL# 38016
 SURE-VENT AIR ADMITTANCE VALVE OR
 EQUIVALENT
 COMPLIES TO ANSI 1051 A1B



DWY PLAN_{NTS}

PROJECT TITLE
RACETRACK CUSTOM

424 RACETRACK RD
 HENDERSON, NV 89015

SHEET TITLE
**DRAIN WASTE &
 VENT**

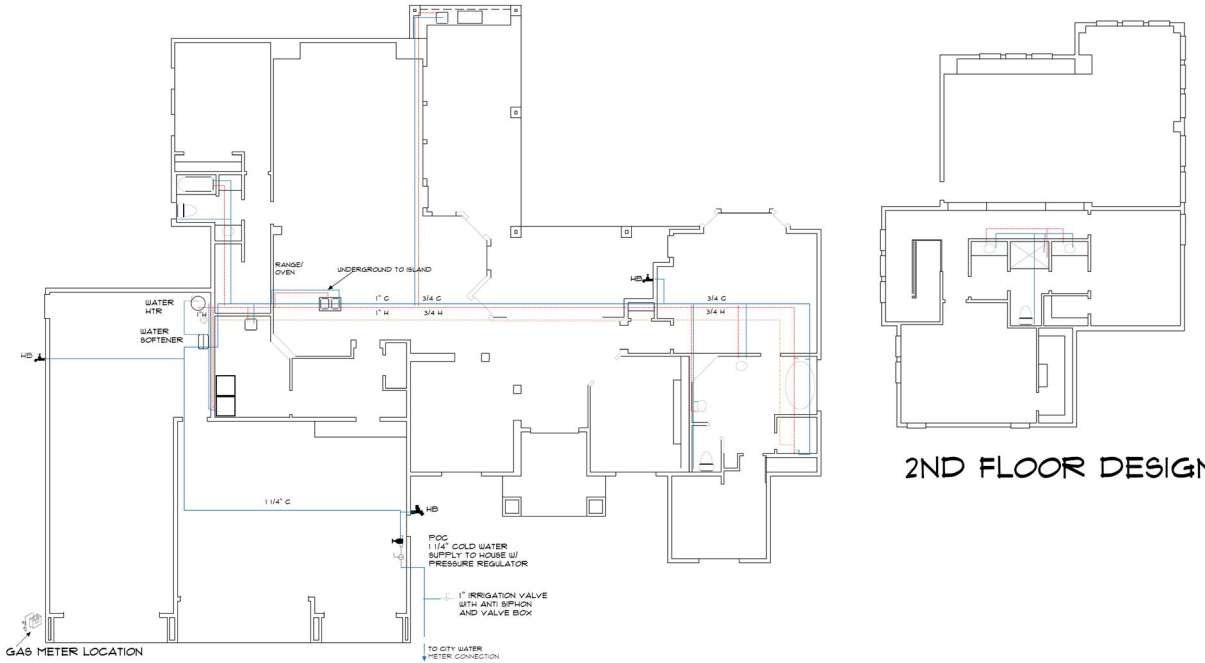
ISSUE DATE

DRAWN BY

PROJECT #

P-1

WATER & GAS PLAN NTS

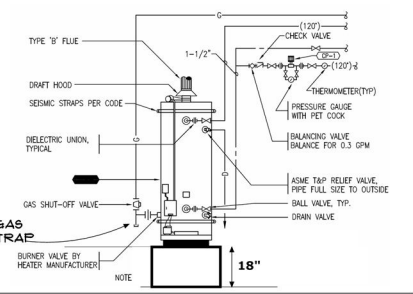


PLBG MATERIAL LEGEND	
COLD WATER (WIRSBO OR COPPER)	
HOT WATER (WIRSBO OR COPPER)	
HOT CIRCULATION (WIRSBO OR COPPER)	
NAT GAS (BLACK IRON)	

WSFU CALC TBL 610.3 UPC

WATER FIXTURES			
FIXTURE	QTY	FU EA	TOTAL
WATER CLOSET	3	2.5	10.5
LAV	5	1	5
BATH TUB	2	4	8
SHOWERS	2	2	4
KIT SINK	1	1.5	1.5
WASHER	1	4	4
UTILITY SINK	1	1	2
HOSE BIB	3	2.5(1)	4.5
TOTAL WSFU (TBL 610.3)			39.5

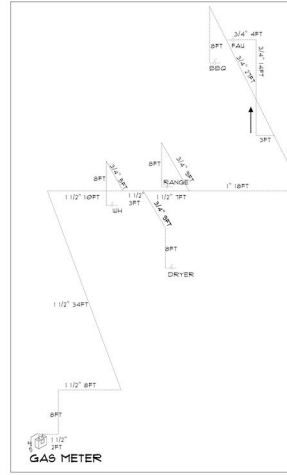
METER & PIPE SIZE-UPC 610.4			
STREET PRESSURE	MAX LENGTH	# FIXTURES/FU'S	METER/SUPPLY
80	150	20/39.5	MIN 1" METER 1 1/4" BLDG SUPPLY



WATER HEATER SCHEDULE						
SYMBOL	MFR MODEL OR EQUIVALENT	MIN STORAGE (GALLONS) OR GPH	TYP OF GAS	GAS INPUT BTU	VOLTS	EFFICIENCY
HU	RHEEM MODEL	50 GAL	NAT	40,000 BTU	NA	88%

2ND FLOOR DESIGN

GAS CALC AND ISOMETRIC DESIGN

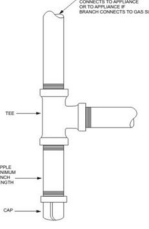


NOTE
 ALL GAS PIPING TO BE IRON PIPE
 PROVIDE SEDIMENT TRAP SEE NOTE 2
 IRON PIPE UPC TBL 1215.2(1)
 METHOD USED (FURTHEST APPLIANCE) 134 FT TOTAL DEVELOPED LENGTH
 NAT GAS SG -.60 @ 0.5 IN WC PRESS DROP

GAS EQUIP LIST (NAT GAS)					
ITEM	DEVELOPED LENGTH IN FT	QTY	BTU	CU FT PER HR	MIN CONNECTION IPS
FURNACE 1	108	1	100,000	31	3/4
FURNACE 2	115	1	100,000	31	3/4
FURNACE 3 GND FL	120	1	100,000	31	3/4
GAS DRYER	83	1	35,000	32	1/2
WATER HEATER	76	1	40,000	36	1/2
RANGE	50	1	65,000	55	3/4
BBQ STUB	134(FURTHEST)	1	75,000	68	3/4
TOTAL			BTU 515,000	468 CU FT/HR	

NOTE 1 ALL WATER LINES TO BE 1/2" UNLESS NOTED OTHERWISE

NOTE 2 UPC 1212.8 SEDIMENT TRAP
 WHERE A SEDIMENT TRAP IS NOT INCORPORATED AS A PART OF THE APPLIANCE, A SEDIMENT TRAP SHALL BE INSTALLED DOWNSTREAM OF THE APPLIANCE SHUT-OFF VALVE AS CLOSE TO THE INLET OF THE APPLIANCE AS PRACTICAL, BEFORE THE FLEX CONNECTOR WHERE USED AT THE TIME OF APPLIANCE INSTALLATION. THE SEDIMENT TRAP SHALL BE EITHER A TEE FITTING WITH A CAPPED NIPPLE IN THE BOTTOM OUTLET, AS ILLUSTRATED IN FIGURE 1212.8, OR OTHER DEVICE RECOGNIZED AS AN EFFECTIVE SEDIMENT TRAP.
 ILLUMINATING APPLIANCES, RANGES, CLOTHES DRIVERS, DECORATIVE APPLIANCES FOR INSTALLATION IN VENTED FIREPLACES, GAS FIREPLACES, AND OUTDOOR GRILLS SHALL NOT BE REQUIRED TO BE SO EQUIPPED.



PROJECT TITLE
RACETRACK CUSTOM
454 RACETRACK RD
 HENDERSON, NY 12509

SHEET TITLE
GAS / WATER

ISSUE DATE _____
 DRAWN BY _____
 PROJECT # _____

P-2